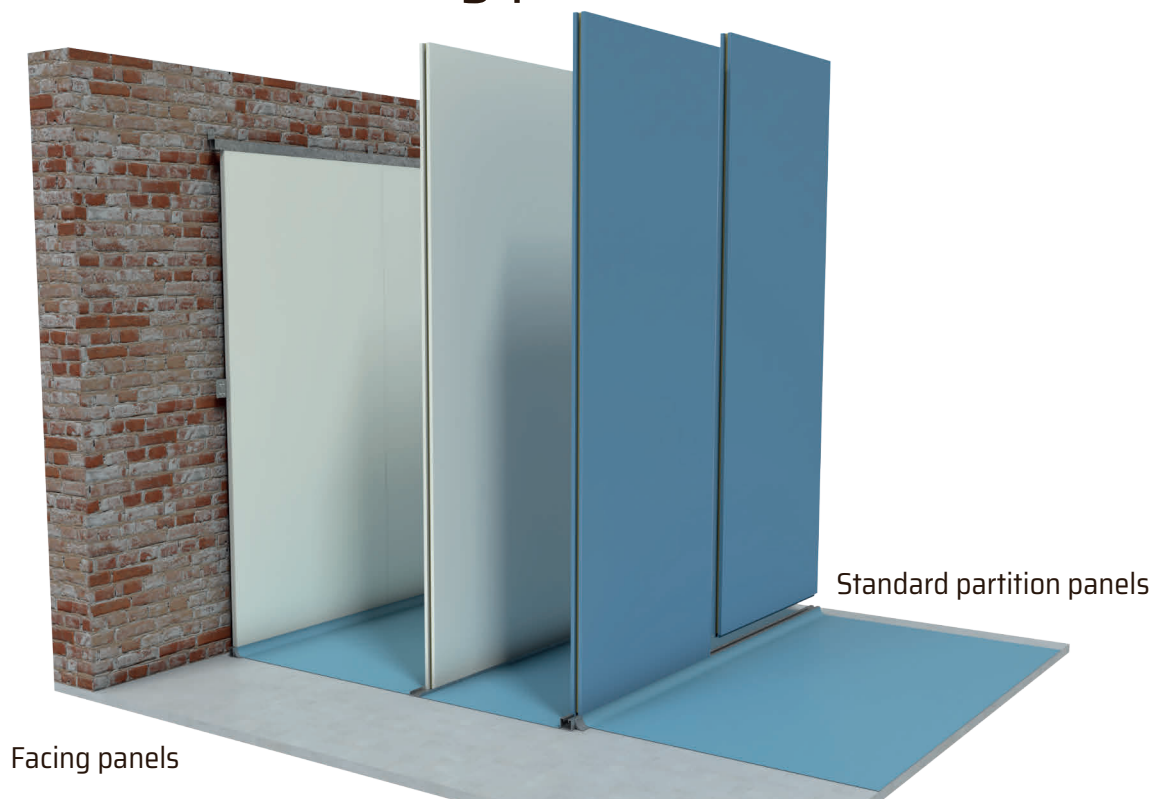


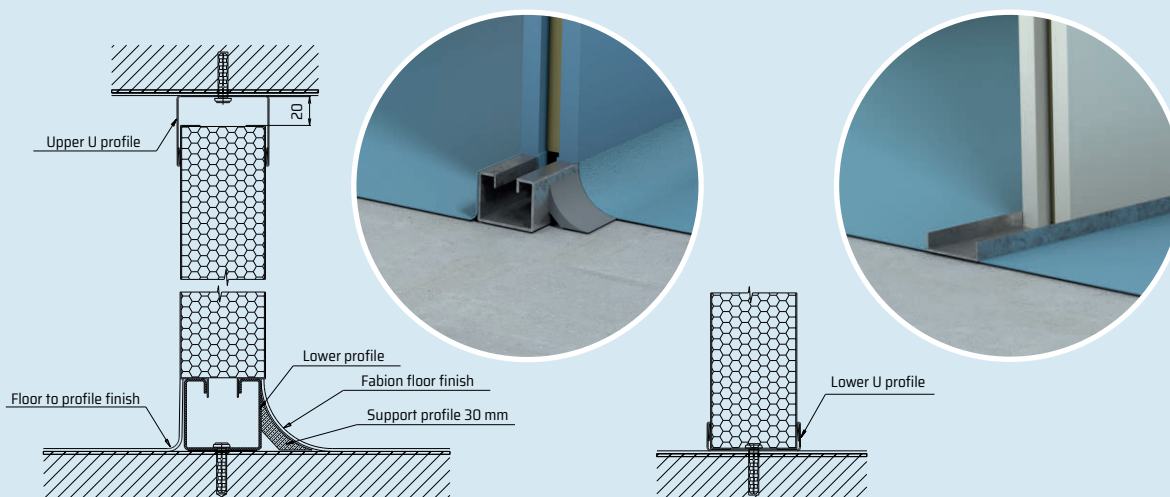
## Partition and facing panels



Partition and facing panels are essential building blocks for building clean rooms and workplaces with requirements for sterility, hygiene, easy maintenance and sanitation. Their design is suitable for premises in the pharmaceutical industry and in healthcare. They can also be used in other areas with a defined cleanliness class in accordance with ČSN EN ISO 14644 Clean rooms and the relevant controlled environment.

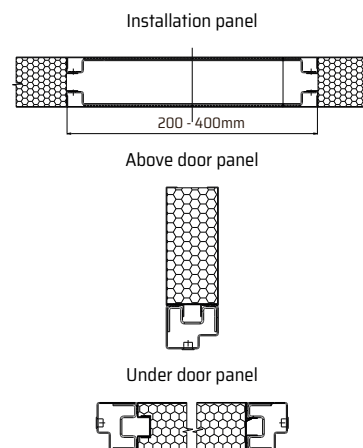
**Partition panel:** sandwich type, consisting of powder coated metal and an inner filling made of mineral wool in various options. The standard thickness of the panels is 60 mm. Thickness can also be 80, 100 and 120 mm. The maximum width of the panels is 1180 mm and the maximum height is 3000 mm. 3000 mm the panels are folded in height to the required size. All panels are also made of stainless steel.

**Facing panel:** Produced in two options. Either as a sandwich panel with a thickness of 32 mm or as a sandwich panel on the visible side made of powder coated metal with a gypsum board filling with a total thickness 19 or 13.5 mm. The maximum width of the facing panels is 1180 mm, and the maximum height is 3000 mm.

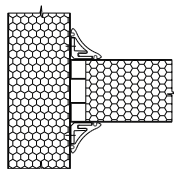
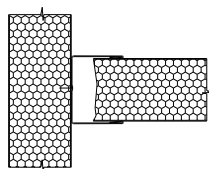
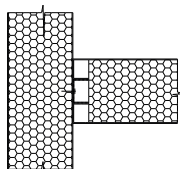


## Basic dimensions of partition panels

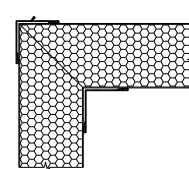
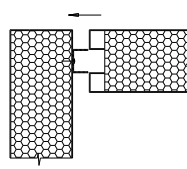
Description	Standard solution	Possible solution
Width (mm)	1180	min. 150 - max. 1180
Height (mm)	3000	min. 150 - max. 3000
Thickness (mm)	60	min. 60 - max. 120
Filling	Mineral wool	Mineral wool, polystyrene, styrofoam
Colour and material	Powder coated galvanized metal sheet (th. 0,75mm)	RAL 9010, RAL 1015, RAL 6027, RAL 5024, RAL 9002, powder coated galvanized metal sheet (th. 0.8mm), stainless steel AISI 304
Side finish	Tongue groove	Tongue groove, straight, visible
Lower finish	Tongue	Tongue
Upper finish	Straight	Tongue, groove, straight
Side support	none	Without, with door support, reinforced
Openings	none	With or without
Glazing	none	With or without



Vertical joints



Corner joints



## Basic dimension of facing panel

Description	Standard solution	Possible solution
Width (mm)	1180	min. 150 - max. 1180
Height (mm)	3000	min. 150 - max. 3000
Thickness (mm)	19; 32	13,5; 19; 32
Filling th. 19mm	plasterboard	plasterboard
Filling th. 32mm	Mineral wool	Mineral wool
Colour and material	Powder coated galvanized metal sheet (th. 0,75mm)	RAL 9010, RAL 1015, RAL 6027, RAL 5024, RAL 9002, powder coated galvanized metal sheet (th. 0.8mm), stainless steel AISI 304
Side finish	Tongue	Tongue groove, straight, visible
Lower finish	Tongue	Tongue
Upper finish	Straight	Tongue, groove, straight
Side support	none	Without, with door support, reinforced
Openings	none	With or without
Glazing	none	With or without

